

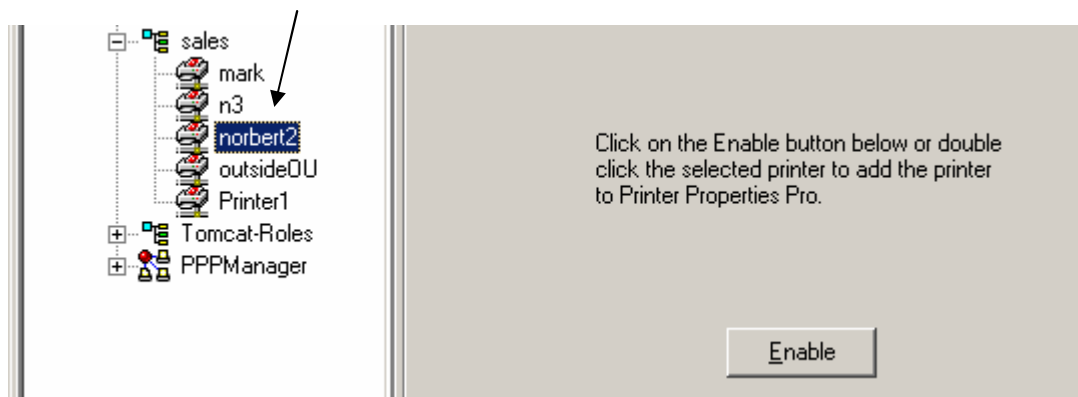
Using the Printer Template Feature

The new printer template feature allows you to simultaneously create printer configurations for more than one printer of the same driver. This represents a huge time savings for larger organizations with more printers. The configuration process is still basically the same, except that you do not have to install each printer now, and you can select multiple printers in the NDS browser. Here's how it works and looks.

Step 1

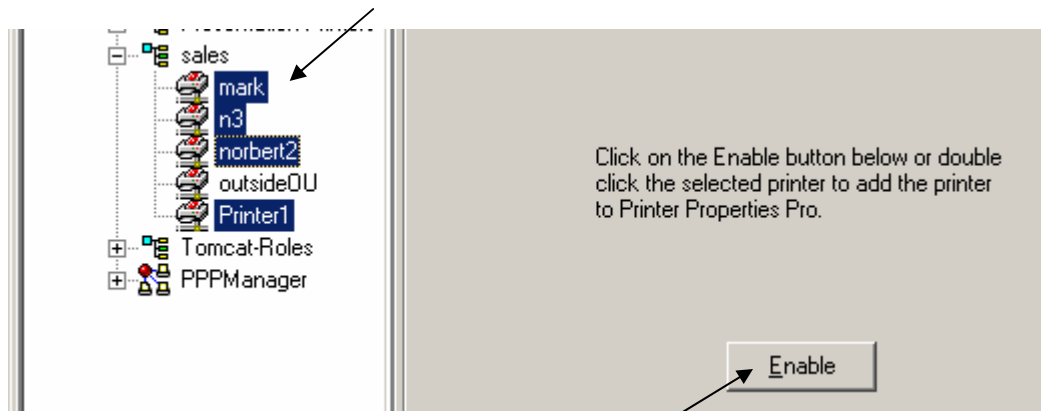
Select a single template printer.

Each time you use the template feature, you will first select a single printer to be the template. This printer must be installed on your computer in order for you to make configuration settings. This printer does not need to be previously Enabled or Configured.



Step 2 - Select the rest of the printers you want to receive the same configuration.

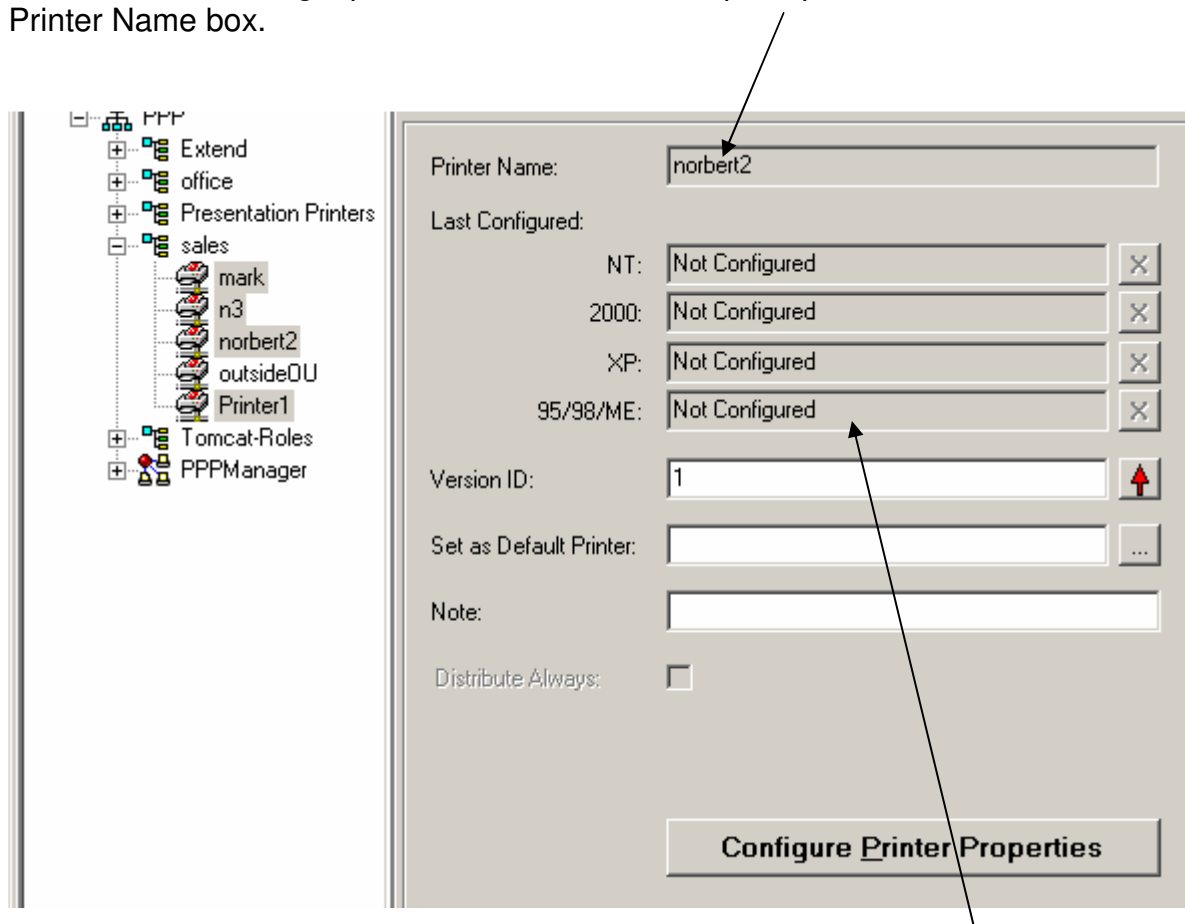
Use the ctrl or shift key to select as many printers as you want. *****IMPORTANT***** These printers **MUST ALL** be using the exact same driver and version.



Step 3

Enable and Configure the printers.
If necessary, click Enable to enable all the printers.

Once enabled, the right pane should show the template printer, or the first one selected, in the Printer Name box.

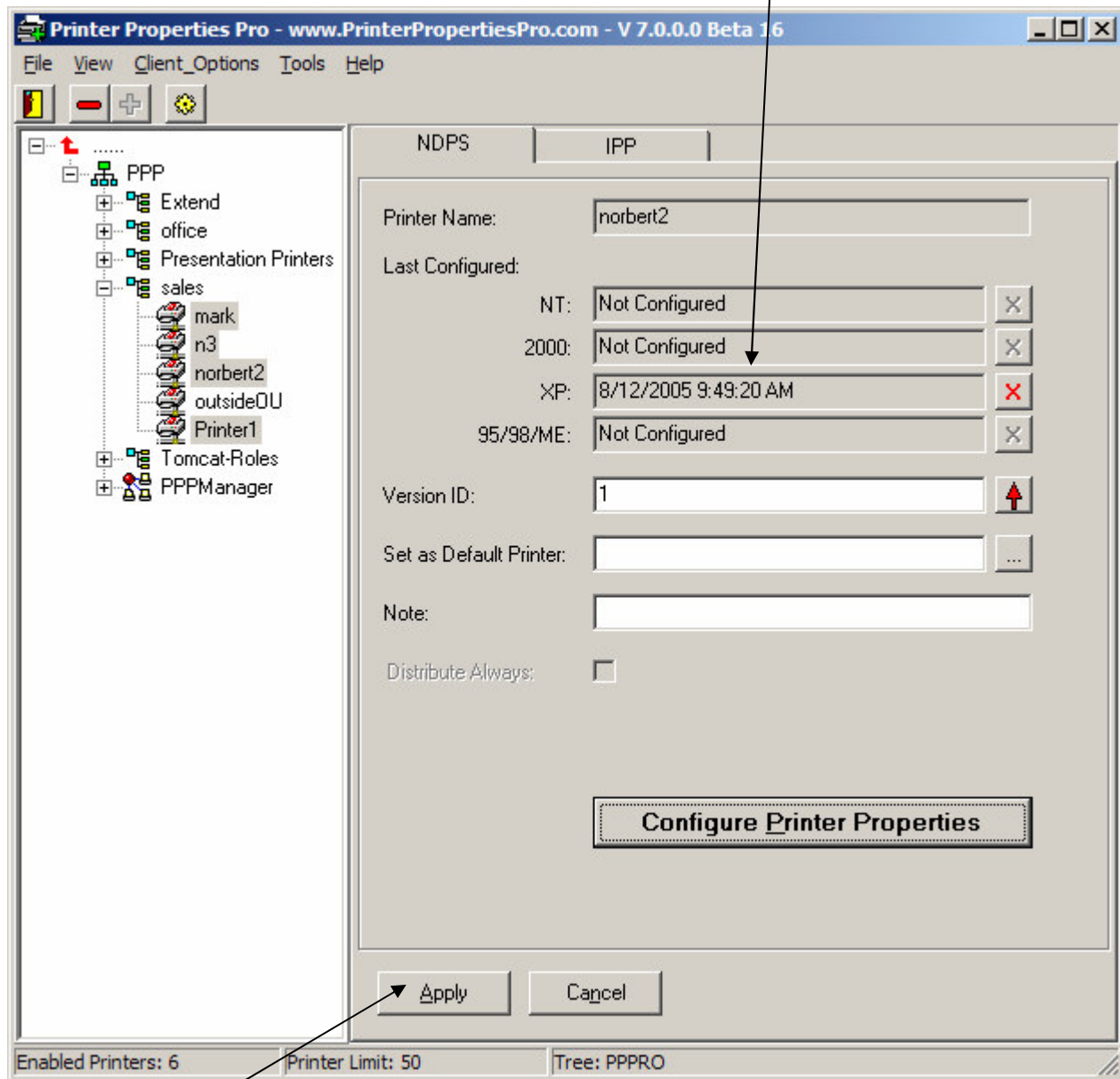


At this point, you may or may not have a timestamp in the Last Configured area. If you do, that means you had a previous configuration on the template printer, and it will be shown when open the properties. If you don't, that's okay. Now click Configure Printer Properties, and the printer driver for your template printer will open.

(see next page for Step 4)

Step 4 – Configure the Driver.

Configure the driver settings as desired, and the same as in previous versions of PPP. When finished, click **Ok** on the driver window to save your settings, and then click **Continue** in the small PPP window that appears. You should now see a timestamp in the appropriate OS box for your printer.



Click **Apply** to save your settings. When you do this, PPP runs through the list of printers you have selected on the left, and creates configuration files for each one, the same as if you had installed and configured each one.

Making Changes with the Printer Template Feature

When you need to change a printer's settings, you can change one printer or as many as you want, following the same procedure as before. Just pick one printer to be your template, install it, select it first, then select as many other printers as you want to change. By selecting your template printer first, it will already be configured the way you had it before, so you don't have to guess. Step through the configuration and when you're finished, PPP will create new, modified configurations for each of the printers selected.